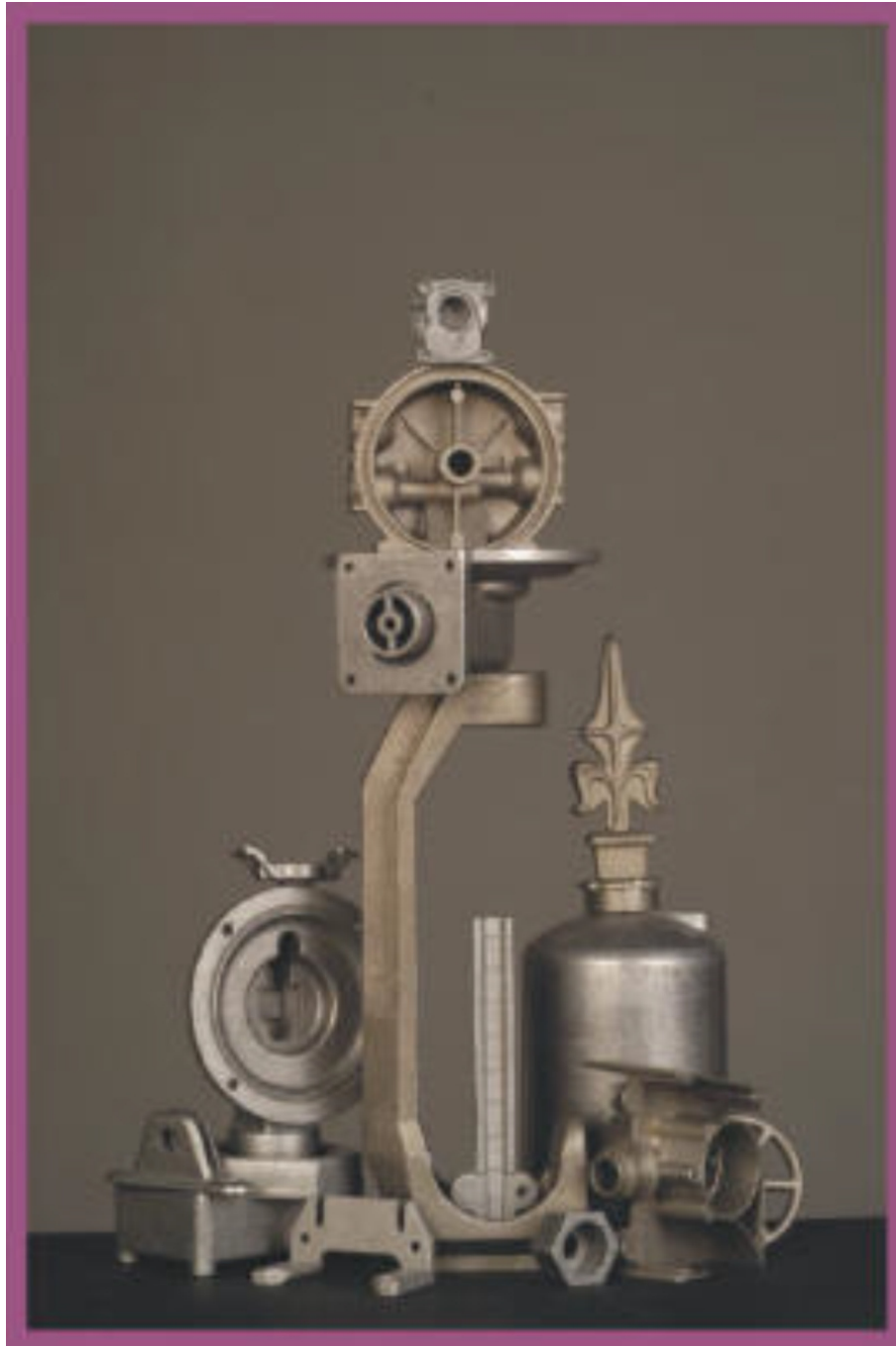


## INVESTMENT CASTING - Al and Cu Alloys -



\* Most complex inner and outer configurations  
flexibility

\* Small dimension tolerances

\* Good mechanical qualities

\* Construction

\* Compact and homogenous structure

\* Excellent surface quality

\* Quality certificates: ISO 9001 and SORS 9000

“Krusik - Investment Casting Plant” owns the facilities for pressure casting, metal die casting and sand casting. Mainly used materials are Al and Cu. Nery complex items are manufactured using the technology of pressure casting, parts with complex inner and outer structure and thin walls. in our plant, casting is done in “BUHLER” and "TRIULZI" machines with horizontal and vertical “cold” press chambers. Pressing force, depending on the type of the machine ranges between 1.300 and 2.800 KN. Maximum weight of pressure casts:

Al alloy casts-up to 2 kg

Cu alloy casts-up to 5 kg.

Max weight of casts cast by sand method is up to 100 kg.

Send your drawings of a machined part with a request for offer and, if possible, a sample in order for us to get the full idea on the requirements. We perform the complete service, from designing and tool manufacturing to the cast itself.

The parts produced using this technology have found their application in all industry branches. We posses chemical and metallurgy laboratories where manufactured items are controlled for their chemical composition , homogenous structure, mechanical qualities and dimensions.

Krusik has been awarded two certificates for the quality of its products: ISO 9001 and SNO 9000.

These certificates cover Al and Cu cast items.

